

Diagnosis of Escherichia Coli Urinary Tract Infection and Multiple Drug Resistance Isolated Educational City Al-Sadr in Najaf

Zina murshd kadim

<mailto:zinamurshd@gmail.com>

Iraq/Baghdad

Al_Esraa University/Dentistry college/Microbiology

Abstract

Najaf sisan Hospital has four clinics: academic, state-of-of-the-the-art, stylish, conservative, excellent, and tasteful. hospitals (in Britain) provide state-of-of-the-the-art equipment care and go above-the-average treatment, on average. Bacteriuria was found in this sample (24.3%) was made up of Escheria coli (40%) and the remaining bacteria (10%) were made up of Coli (15%). In the absence of co-infect ingested pathogenic microbes the 38% incidence of urinary tract infection during meals, versus a prior incidence of up to 25% in women of childbearing age (25 and over) (39.6 percent). on the other hand, however, there were more than 20 antibiotic-resistant E. coli on the scenes of 20 different antibiotics, and yet only 5 (27.5% of 67.5) of the tested were found to be resistant to the biological test. The different kinds of antibiotics.

Keywords; Diagnosis of Escherichia coli, urinary tract infection, multiple drug .resistance isolated.

Summary

Urinary tract infections can affect millions of people each year, including those that affect the bladder, kidney, and can cause cystitis, urethritis, and Urologic disease. The cystoscope is a powerful instrument which allows us to look at the urinary tract using x-ray energy, but must be operated with sterile technique to prevent infection (Gupta and Trautner, 2012).

E is a common cause of bladder infections. Mixed urinary tract infections can trigger more than 90% of Staphylococcus pyogenes (in total) and can be responsible for up to 20% of chlamydia and mycoplasmic infections as well as klebsieuem (Ramos et al., 2012; Ejrnaes, 2011).

constantly found in the intestines and are the primary causes of (causes 90% of all UTIs) (UPEC). coliform, as they exist multiply in the gastrointestinal (GI) tract, go out through the skin, and then leave the body through the bloodstream and body's lymph system (Bien et al., 2012; Schwan, 2008).

There are other studies that suggest that E. coli resistance may not be just for beta-lactam antagonists, but also include other classes of antibiotics (aminocidas, macrolides, Tetracycline, phenicilisin, and clarithromycin) There is a high rate of

pathogens that develop resistance to antibiotics and have long-recooperative success (Khawcharoenporn et al., 2013).

E's antibiotic resistance was exemplary. Ecoli bacteria is found in the genetic material on chromosomes or plasmids and is separate from the chromosome or plasm because of its ability to mutate, thus leading to the rapid speciation and proliferation of multiple resistance. The most common means of genetic resistance to drug treatment is via the transposon gene (Iyer et al., 2013; Alvarez et al., 2012).

The main objective of this study is to concentrate on and diagnose E. The second goal is to see if it is a single or more, which has the effect of looking at the type of bacteria and how we combat it, which is different from that of course. using the bacteria from patients who are going to Sadr Medical, is preferred to prevent illness in the healthcare facility.

Materials and procedures that accomplish one or more goals, not just decoration A collection of Thorac pediatric samples from the university medical center

Self-perpetition and examination identification of bacterial subpopulations

There is just one of all. Certain forms of bacterial infection diagnosed based on the presence of the pathogen's protein level of habitability, certain tests for oxidase and catalase, and movement of the bacteria. (Overall, Arslan et al., 2002; in the study by McFadden, 2000)

tolerance test The allergic reaction that occurs to penicillin is called an antibiotic reaction since it resembles a fungus, According to the antibiotic disc diffusion study, the isolates are considered to be resistant to the following drugs: (penicillin, ampicillin, carbenicillin, ticracillin, cefotaxime, ceftriaxone cefepime, cefoxetin, centroname, empenem, myrubnim, amikacin, tobramycin, grapamycin, Turkey, Grapamycin) Biochemical research This is inexcusable (2014).

It is results and debates which differentiate philosophy from ordinary knowledge. These findings challenge longstanding dogmas in the theory of management."

This figure in the percentage of significant bacterial uremia is 63 (24.32 percent). Studies of the presence in one region of more than 10 purulent cells plus positive findings about transplantation In the samples analyzed, the number of women who had bacterial uremia was 38 (60.31 percent). reflect approximately half of what was found (39.68 percent). This conclusion is larger than the proportion of my population that has UTI. genitals that promote the growth and existence of sympathetic and pathogenic bacteria and the corresponding difference in outcomes Urinary tract problems seem to be more prevalent in women than in men. Norinder et al. (October 2011) found that only 3.6% of CEOs were board chairpersons, including men (3.6% of the men and 3.4% of the women.

Table (1): Statistics and rates of diagnosed bacterial lesions for patients who have urinary tract infections Table (1)

percentage	Females	Males	the number	The type of transplant
(24.32%)	(70,31) 38	25(39.68%)	63	Important bacteriuria
(4.25%)	7 (63.63%)	4 (36.36%)	11	Unimportant bacterial uremia
(71.42%)	75 (40.54%)	110 (59.45%)	185	There is no bacteriuria
100%	133(51.35%)	126(48.64%)	259	Total

— I am not in the first place I am in the second place, I am in the third part of the second part, I am in the second part, in the second part (1).

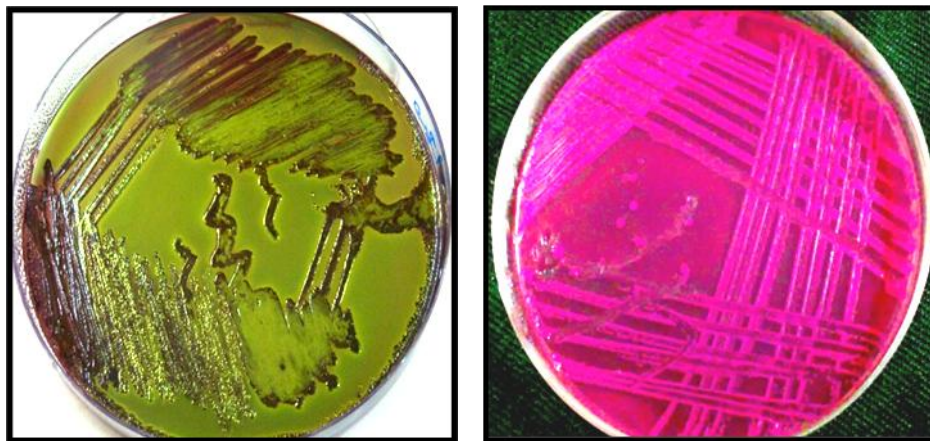
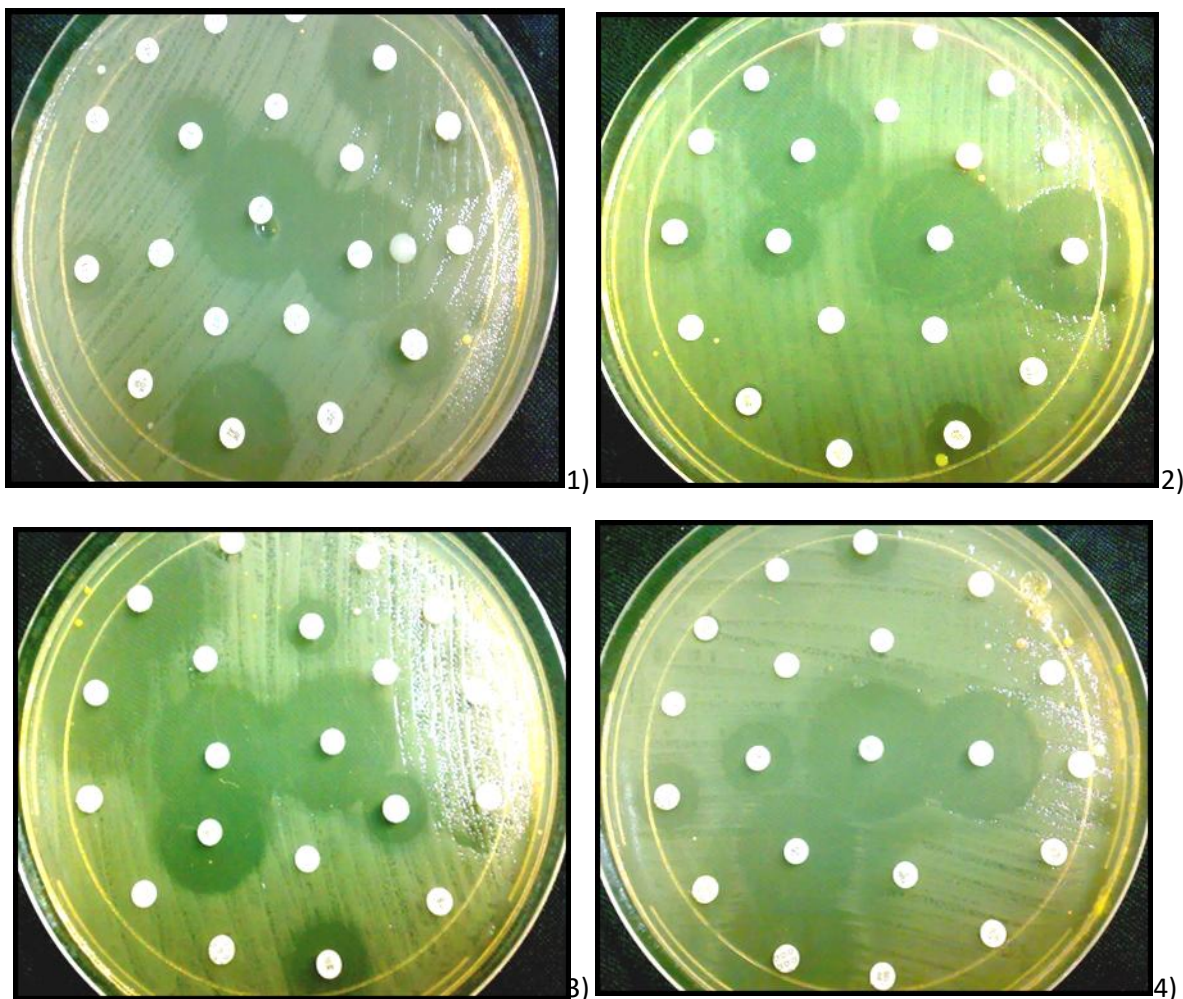


Figure (1): Diagnosis of some of E's cultivar features. Coli bacteria by growing them on selective mediums (Figure 1 depicts pink E. coli colonies on McConkey medium, and Image 2 shows green E. coli colonies on the medium eosin with metallic luster (metal reen sheen). Red [Eosin Blue Methylene (EMB)].

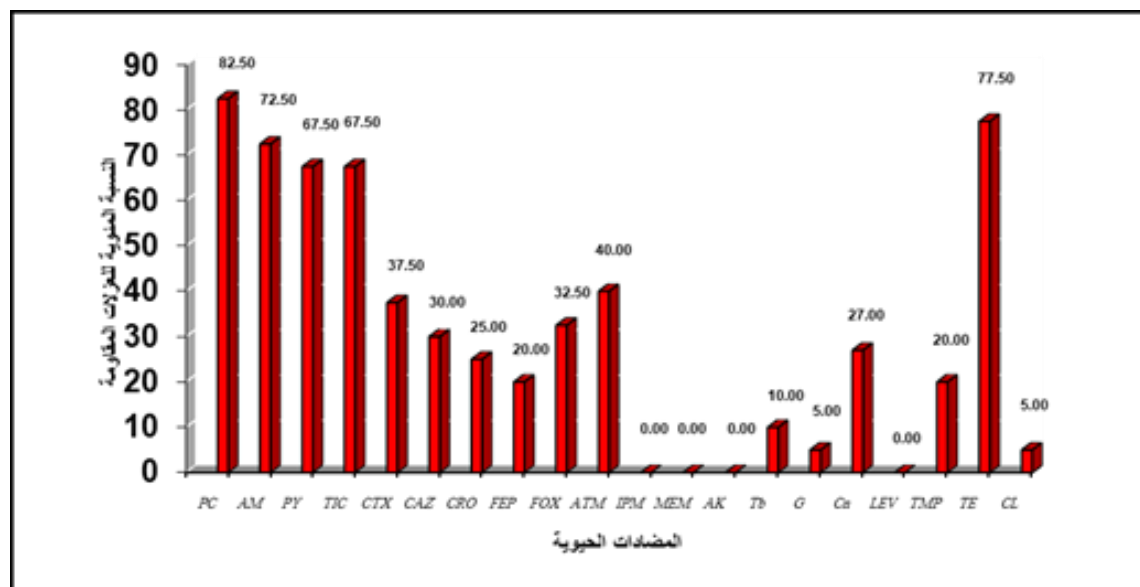
The antibiotic sensitivity test was performed in the figure, which reveals that the number of bacterial cells on the surface of the tablet diffuses with increasing in a regular pattern (2). Specifically, the resistance to most likely increased, with the percentage of bacteria with resistance to the most powerful beta-lactam antibiotics showing an increase to 33 (82.5 percent). The relative proportion of penicillin and ampicillin resistance in this sample is lower than in the Aiyegor and his colleagues (100%) but has increased in this other studies (i.e., Aiyegor's and his group (2007) versus Navane and her group (2002). As resistance to intestinal bacteria to the strains of bacteria producing an inhibitory metabolite called beta-lactamase (Al Y, 2016) (2015; Aiyegoro et al., 2007).



Two methods of discharge and several antibiotic resistance classifications have been used in all subsequent CLSI versions of this formula (up to and including the 2015 CLSI publications, found in Fig. 1, 2, 3, and Fig. 4)

It has been discovered, that the study shows a percentage of cefoxitin (ceftazandide) resistance has been 15 (37.5%), 12 (30%) and 13 (25%), respectively, and 10 and 12.5 percent respectively (40 percent). Isolates are readily susceptible to meronem and ammerem, which means they're resistant to it (0 percent). The common E. coli bacteria may be produced to be resistant to ceftriax, aztreonam, and cefotaxime since these are widely used as macrolide and ketolide multidrug-resistance antibiotics

(penicillinase, cephar, and monobactam) can no longer be effective. Since the presence of ESBL-pls, other treatments are essential in the treatment of UTIs (Enterococcus faecium or Staphylococcus aureus aureus aureus) (Al Yousef et al., 2016; CLSI, 2015;).



Intimations: Elaborations The isolate strain of antibiotic-resistant urinary tract infection found in Sadr City, Iraq, resisted treatment with antibiotics in 40 patients from having attended the school.

Thus, by definition, average: Thus, in a sense, defined; M: and variance, P: often referred to as "the probability of this to be average"

PC: ampicillin, CAZ: CFT: CAZ: AM: IPM: FEP: TMP, trimethocaine, TH: Tetracycline, Chlorampicil.

The E. Coli bacteria have found various ways to counteract beta-lactamase inhibitors, focusing their beta-lactamase enzyme in the paraplasma and prohibiting their activity in the bacterial cells.

Secondly, the second antibiotic classes also showed variation, but efficacy and effect emerged as the winner, as they were all susceptible to the aminocals, with amicils and gentics being 40 (0 percent), and tolerance to tobramycin (40 percent) only seen in the remaining isolates (5). The percentage of resistance to quinoline-cin antibiotics was 11 (27%), and all isolates were susceptible to levoxyl, as well (5 percent). The finding demonstrated that the tetracycline resistance rate was found in the isolates, with 31 (77.5%); however, there was also a rise in the rate of susceptibility to other antibiotics not listed above. with wide spectrum beta-lactamase-producing isolates and the results suggest a variety of effective antibiotics amid antibiotic resistance, a randomized trial could be the only feasible approach to determine if these various techniques would work on any given patient or not (UTIs)

Based on the present findings, 27 of the 67.5% of the tested strains were E positive. Multiple resistance to antibiotics can be observed, but only to the commonly-prescribed five: penicillin, ampicillin, tetracycline, tetracycline, and Bush et al. (2005) (P).

Conclusions

In this analysis, the percentage of E. coli found to have an infection is low, since the study areas were judged to be low risk, and E. coli exhibited resistance to both beta-lactam and some related antibiotics were more common in females. Such essential government services, such as transport, communications, healthcare, and law enforcement, will not be adversely affected.

The Daily Inspiration: "You can lead a horse to water, but you can't make it drink," I said to him.

encouraging patients to good hygienic care in order to ensure they remain infection-free throughout the healing process to prevent them from transmitting the infection and getting infected, and guiding them to complete their treatment so that they don't get infected and in the long run.

References

- 1) Aiyegoro, O. A., Igbinsosa, O. O., Ogunmwonyi, I. N., Odjadjare, E. E., Igbinsosa, O. E., and Okoh, A. I. (2007). Incidence of urinary tract infection among children and adolescents in Ile-Ife, Nigeria. *African J. of microbiology reserch.*, 013-019.
- 2) Al Yousef, S.A., Farrag, E.S., Ali, A.M. and Mahmoud, S.Y. (2016). Detection of extended spectrum β -Lactamase producing *Escherichia coli* on water at Hafr Al Batin, Saudi Arabia. *J. Pollut. Eff. Cont.* 4: 155.
- 3) Alvarez, M., Tran, J. H., Chow, N., and Jacoby, G. A. (2004). Epidemiology of conjugative plasmid-mediated AmpC β -lactamases in the united states. *antimicrob agents chemother.* 48: 533-537.
- 4) Arslan, S. H., Caksen, and Rastgeldi L. B. (2002). Use of urinary gram stain for detection of urinary tract infection in childhood. *Yale. Journal of biology and medicine.* 75(2): 73-78.
- 5) Bien, U., Sokolova, O. and Bozko, P. (2012). "Role of Uropathogenic *Escherichia coli* Virulence Factors in Development of Urinary Tract Infection and Kidney Damage," *International Journal of Nephrology*, 15.
- 6) Bush, K.A. (2015). Resurgence of β -lactamase inhibitor combinations effective against multidrug-resistant Gram-negative pathogens. *Int. J. Antimicrob. Agents* 46: 483-493.
- 7) Cantas, L., Suer, K., Guler, E. and Imir, T. (2015). High emergence of extended-spectrum β -Lactamase (ESBL) producing *Escherichia coli* cystitis: time to get smarter in cyprus. *Front. Microbiol.* 6: 1446.

- 8) Chambers, H.F. (2005). Penicillins. In: Mandell GL, Bennett JE, Dolin R, eds. Mandell, Douglas, and Bennett's principles and practice of infectious diseases. 6th ed. New York: Churchill Livingstone., 281–293.
- 9) Chang, H.H., Cohen, T., Grad, Y.H., Hanage, W.P., O'Brien, T.F. and Lipsitch, M. (2015). Origin and proliferation of multiple-drug resistance in bacterial pathogens. *Microbiol. Mol. Biol. Rev.*, 79: 101–116.
- 10) Clinical and laboratory standards institute (CLSI) (2014). Performance standards for antimicrobial susceptibility testing. Twenty-third informational supplement. M100-S23. Clinical and laboratory standards institute, Wayne, PA.
- 11) Ejrnaes, K. (2011). Bacterial characteristics of importance for recurrent urinary tract infections caused by *Escherichia coli*. Thesis, Danish, Med. Bulltin.
- 12) Frere, J.M., Sauvage, E. and Kerff, F. (2015). From An enzyme able to destroy penicillin to carbapenemases: 70 years of beta-lactamase misbehavior. *Curr. Drug Targets.*, 20-22.
- 13) Gupta, K. and Trautner, B. (2012). Urinary tract infections, pyelonephritis, and prostatitis. In: Harrison's principles of internal medicine. McGraw Hill Medical, 2387–2395.
- 14) Hadjifrangiskou, M., Gu, P.A., Pinkner, J.S., Kostakioti, M., Zhang, E.W., Greene, S.E. and Hultgren, S.J. (2012). Transposon mutagenesis identifies uropathogenic *Escherichia coli* biofilm factors. *J. Bacteriol.* 194(22): 6195-6205.
- 15) Iyer, A., Barbour, E. Azhar, E. and Ali, A. (2013). Transposable elements in *Escherichia coli* antimicrobial resistance. *Advances in Bioscience and Biotechnology*, 4: 415-423.
- 16) Khawcharoenporn, T., Vasoo, S. and Singh, K. (2013). "Urinary Tract Infections due to Multidrug-Resistant Enterobacteriaceae: Prevalence and Risk Factors in a Chicago Emergency Department," *Emergency Medicine International*, Article., 7.
- 17) Lüthje, P. and Brauner, A. (2016). Novel strategies in the prevention and treatment of urinary tract infections. *Rev. J. Pathogens*, 5(13): 1-14.
- 18) MacFaddin, J. F. (2000). *Biochemical tests for identification of medical bacteria* 3rd ed. Lippincott Williams and Wilkins, USA.
- 19) Navaneeth, B. V., Belwadi, S., and Suganthi, N. (2002). Urinary pathogens resistance to common antibiotics: a retrospective analysis. *Trop. Doct.* 32: 20-22.
- 20) Norinder, B.S., Lüthje, P., Yadav, M., Kadas, L., Fang, H., Nord, C.E. and Brauner, A. (2011). Cellulose and papg are important for *Escherichia coli* causing recurrent urinary tract infection in women. *Infection.*, 39: 571-574.
- 21) Page, M.G.P., Dantier, C. and Desarbre, E. (2010). In vitro properties of BAL30072, a novel siderophore sulfactam with activity against multiresistant gram-negative bacilli. *Antimicrob. Agents Chemother.* 54: 2291–2302.

- 22) Ramos, N.L., Sekikubo, M., Dzung, D.T., Kosnopfel, C., Kironde, F., Mirembe, F. and Brauner, A. (2012). Uropathogenic *Escherichia coli* isolates from pregnant women in different countries. *J. Clin. Microbiol.*, 50: 3569-3574.
- 23) Schwan, W. R. (2008). "Flagella allow uropathogenic *Escherichia coli* ascension into murine kidneys," *International Journal of Medical Microbiology*, 298(5): 441–447.
- 24) Tamma, P.D., Girdwood, S.C. and Gopaul, R. (2013). The use of cefepime for treating AmpC β -lactamase-producing *Enterobacteriaceae*. *Clin. Infect. Dis.*, 57:781.